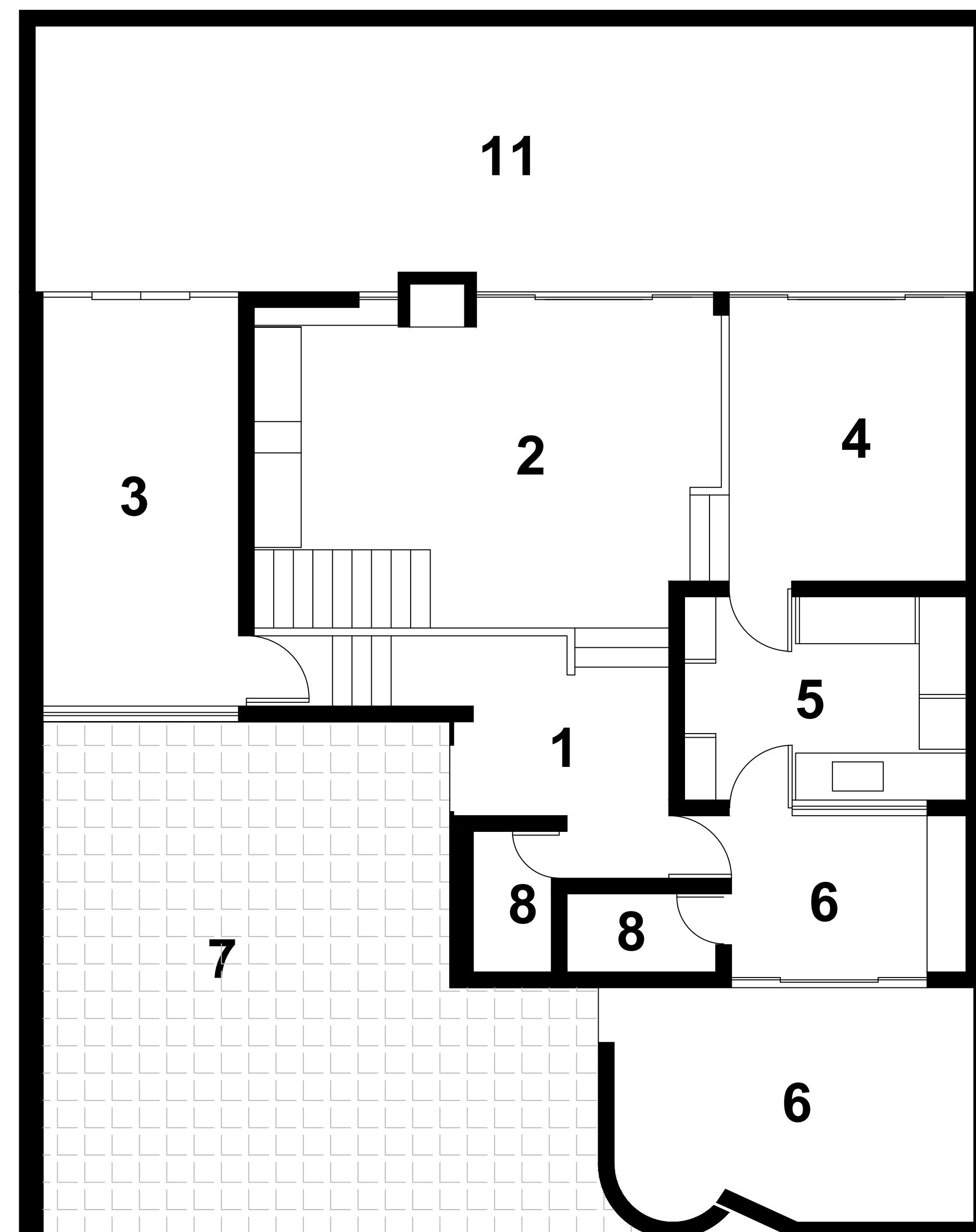
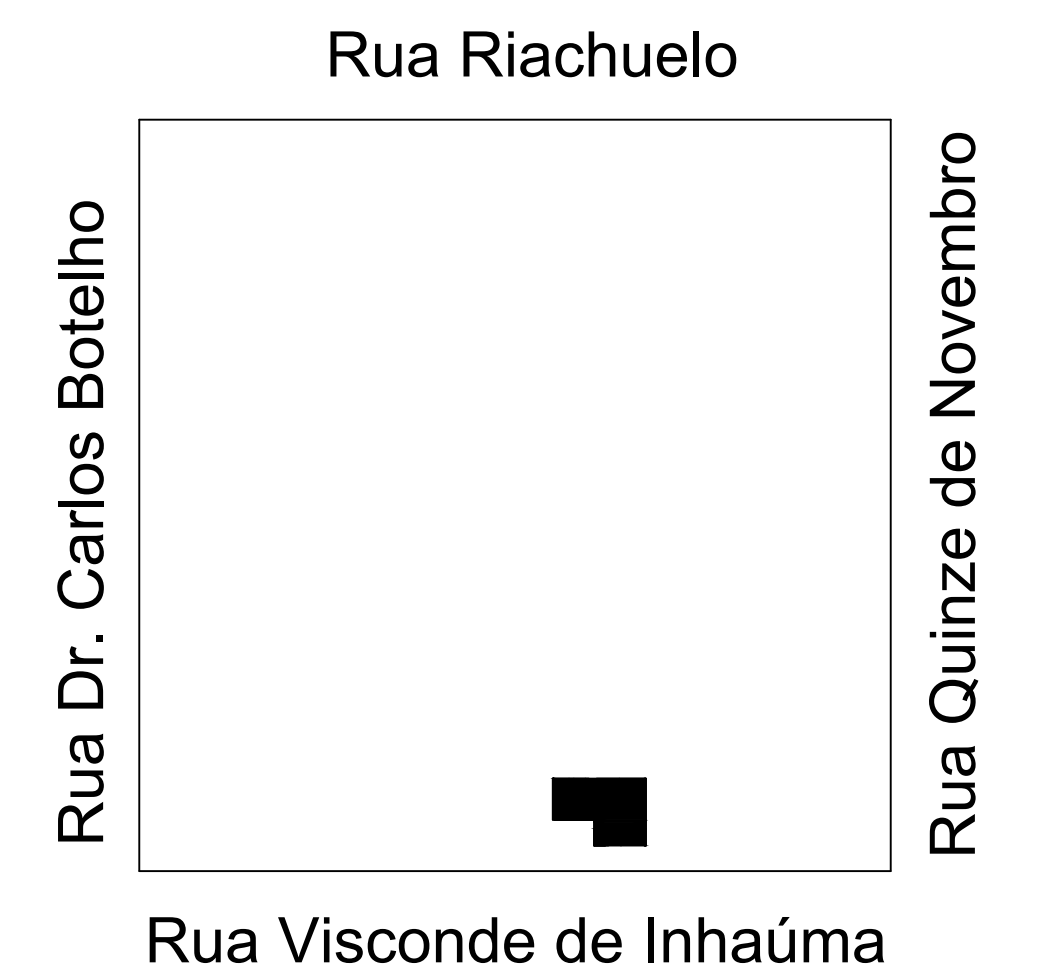
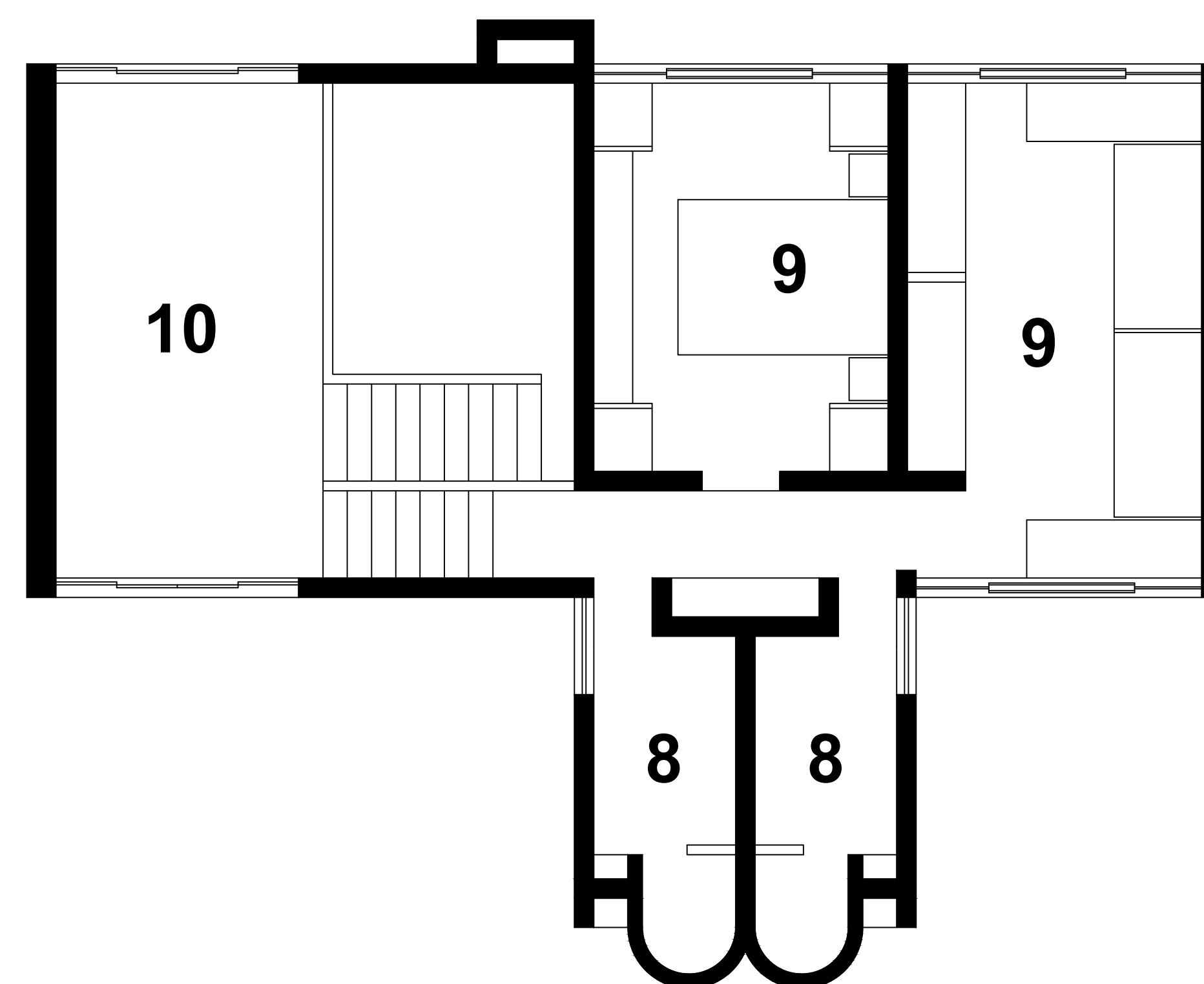


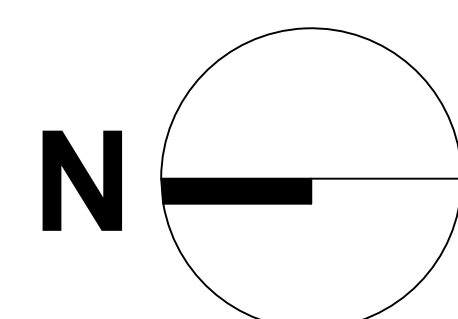
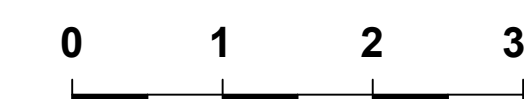
Pavimento inferior



Pavimento superior



- 1. Hall
- 2. Estar
- 3. Estar privativo
- 4. Sala de Jantar
- 5. Cozinha
- 6. Serviços
- 7. Garagem
- 8. WC
- 9. Dormitório
- 10. Estúdio
- 11. Jardim social

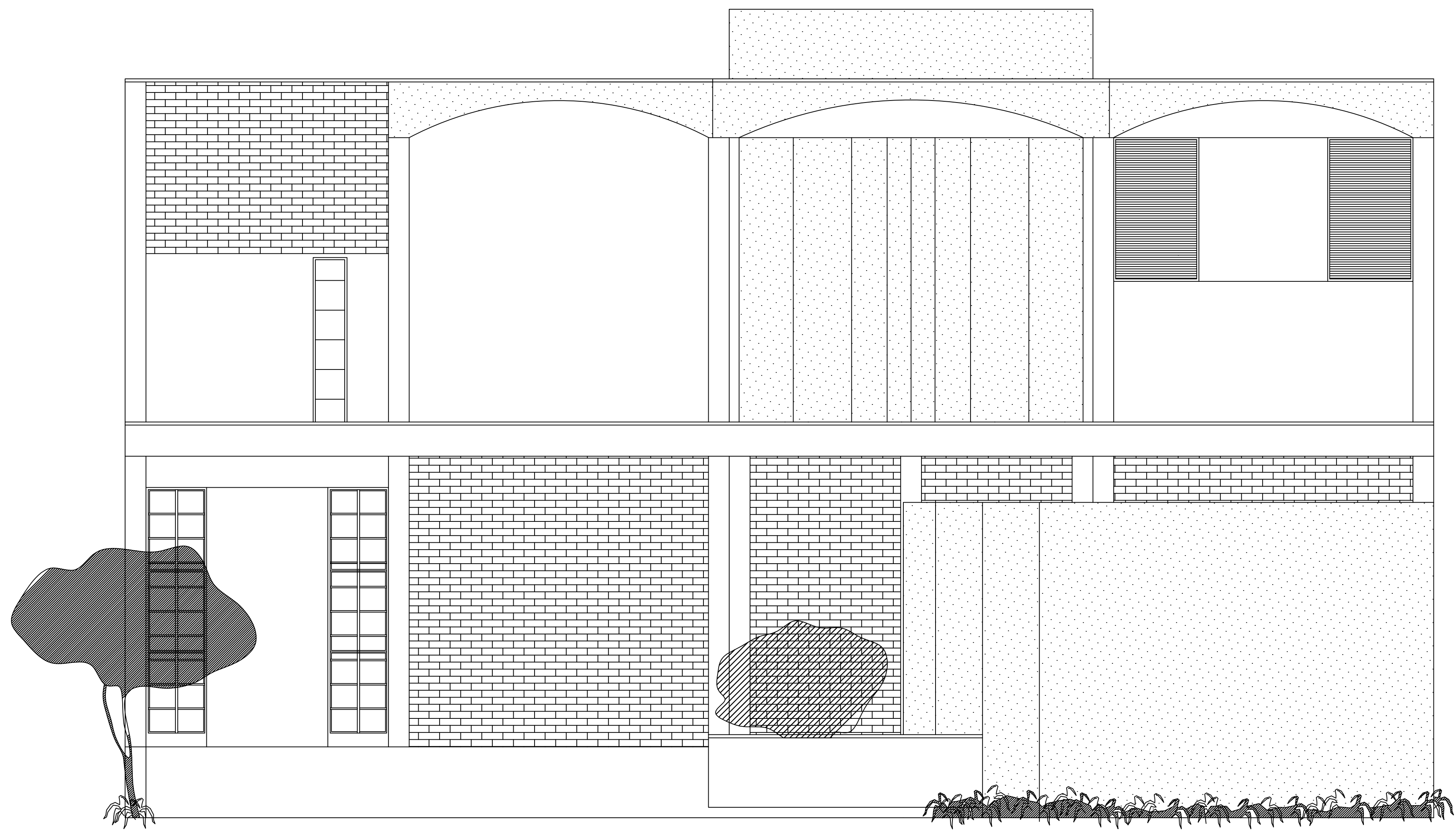


Rua Visconde de Inhauma

Planta Baixa

Residência: Rua Visconde de Inhaúma, 1344

Fonte: Processo nº 6279/74



Fachada

Residência: Rua Visconde de Inhaúma, 1344

RESIDÊNCIA GASTÃO
FACHADA
FUNDAÇÃO PRÓ-MEMÓRIA DE SÃO CARLOS

